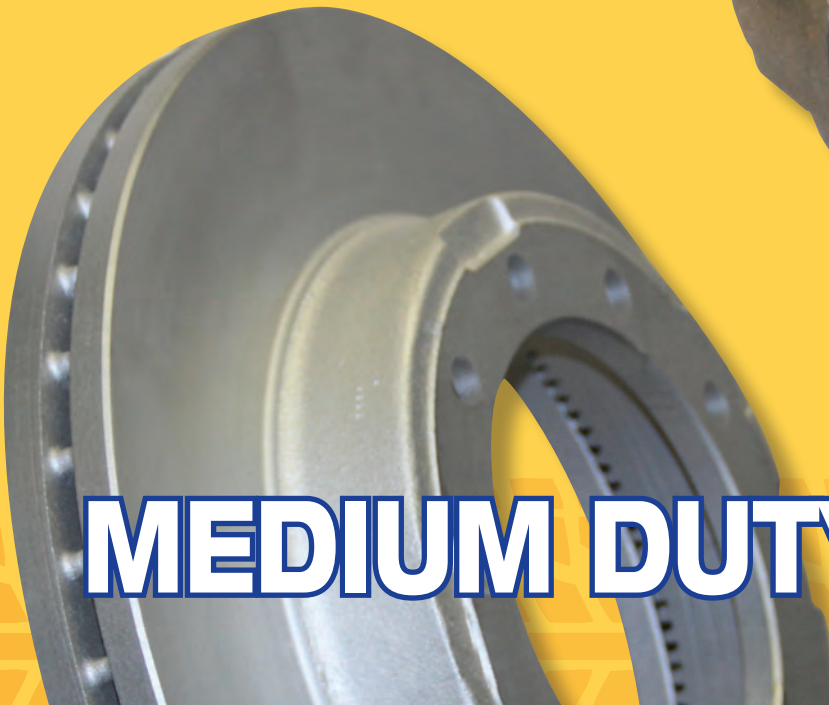


A-LINE™

Engineered. Tested. Chosen.



MEDIUM DUTY BRAKING

Quality Product Starts With Quality Materials and Processes

Quality pads don't just happen. A-Line brake pads are made in Canada with top quality materials from the USA.

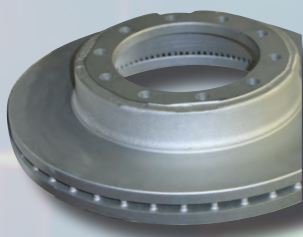
Those materials are positive molded in even distribution 400-ton presses to create the highest-density, longest-lasting pads in the industry.



Top-quality calipers and rotors begin with top-quality proprietary metallurgy. A-Line engineers work closely with our foundries to insure they provide our specified ductile iron for calipers and grey iron for rotors. The unique requirements for each one will guarantee the best performance on your vehicle.



Once A-Line rotors are cast, they are finished with state-of-the-art parallel mill balancing for a disc thickness variation of only 20 microns (.00078"). A-Line rotors are then GeoMet coated for optimal corrosion protection.



A-Line Quality Because Medium Duty is not Moderate Duty



In USA: 1555 Enterprise Parkway, Twinsburg, OH 44087, USA

In Canada: 225 Sheldon Drive, Unit 13, Cambridge, Ontario N1T 1A1, Canada

Toll Free 844-424-7347 www.a-lineparts.com

TABLE OF CONTENTS

COMPONENTS FEATURES AND BENEFITS, INDUSTRY CROSSOVERS

A-LINE Medium Duty Disc Brake Pads

A-Line GC-2 Medium Duty brake pads Features and Benefits	4
A-Line GC-2 Medium Duty brake pad crossover	5
A-Line GC-2 Medium Duty pad ID chart	6 - 7

A-LINE Medium Duty Brake Calipers

A-Line Medium Duty Caliper Features and Benefits	8
A-Line Medium Duty Caliper Industry Crossover	9
A-Line Medium Duty Caliper ID Photo Gallery and Specs	10 - 13
A-Line Medium Duty Caliper ID Quick Reference	14

A-LINE Medium Duty Brake Rotors

A-Line Medium Duty Rotor Features and Benefits	15
A-Line Medium Duty Rotor ID and Industry Crossover	16

APPLICATIONS Data

Find your A-Line Medium Duty pad or caliper using vehicle make, model and year	17 - 19
--	---------

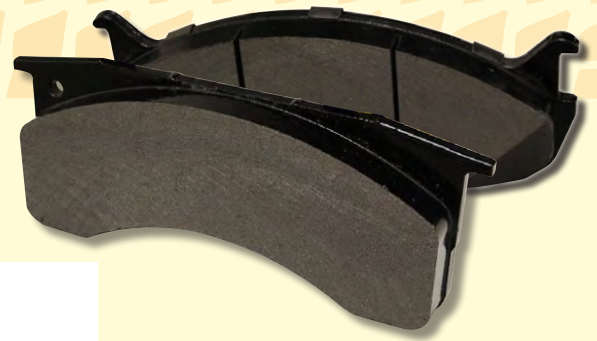
If you still need assistance, call the A-LINE® technical support hotline at:

1-844-424-7347, Ext. 3

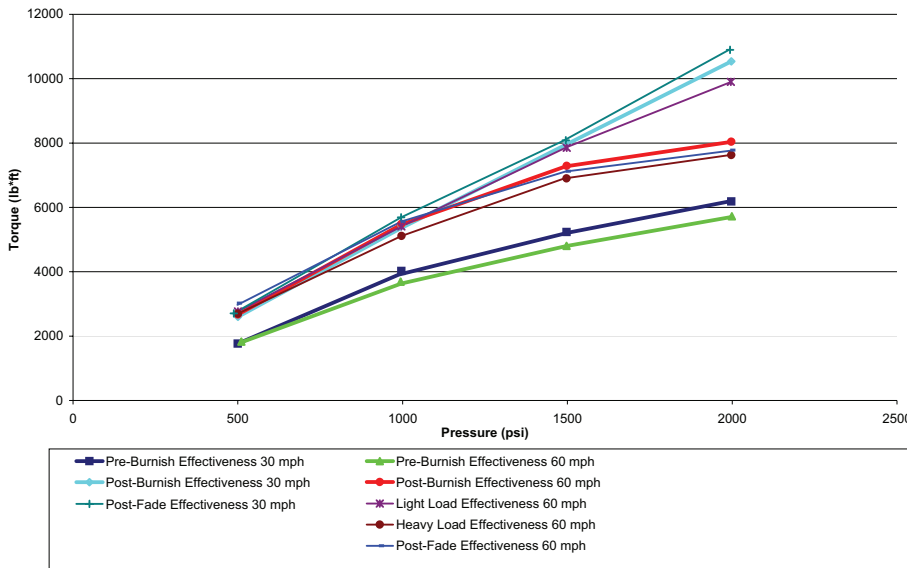
or use our electronic cross-reference at:

www.a-lineparts.com





GC2 Brake Effectiveness Testing



A-LINE GC2 friction produces nearly 10,000 lb-ft of torque when lightly loaded at 60 mph, and 7,800 lb-ft of torque when heavily loaded at 60 mph.

These performance characteristics are perfect for extreme medium duty loads operating in extreme terrains and stop-and-go conditions.

A-Line GC2 Premium Duty for Rough Terrain, Demanding Loads

A-LINE's GC2 friction formulation is a proprietary blend of copper-free semi-metallic and Resilient Graphite Carbon (RGC) specifically formulated for the medium-duty fleet that wants stopping power without compromising brake or rotor life.

Using the latest in positive molding technology, GC2 is engineered with a high yield strength backing plate to support the high temperature resistant GC formulation.

Recommended for all Class 4-7 vehicles, including: school buses, cargo trucks, delivery vans, emergency vehicles, and utility vehicles.

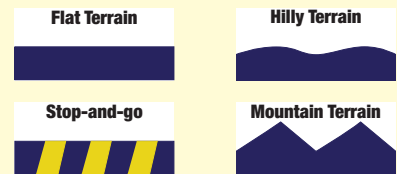
For All Your Medium Duty Needs

Nothing tests a medium duty friction like the severe applications of steep terrain and stop-and-go traffic.

A-LINE's GC2 uses the same foundation of RGC formulation and then ups the ante with a high thermal-resistant phenolic resin to withstand the rigors of heavy loads compounded by stop-and-go traffic and/or steep terrain.

This severe duty friction delivers 22% more torque than competing frictions and ranks among the industry's best.

Suggested Terrain



Our broad coverage of part numbers makes A-LINE® pads the fleet's preferred choice for applications like:

- Utility Trucks
- School Buses
- Delivery Vans
- Cargo Trucks
- Emergency Vehicles

A-LINE® GC2 Hydraulic Pads Canadian Made For Superior Performance



Medium duty brakes are not just a category between light duty and heavy duty, they are the most severe duty applications for hydraulic brake pads.

So A-LINE® teamed up with the experts in North America's harshest environments to engineer our superior GC2 semi-metallic formulation for the most severe hydraulic pads.

Using 100% North American sourced materials, our Canadian manufacturers not only created a formulation designed to provide excellent braking and reduced wear, but will also remain quieter with every application.

Quality brake pads are manufactured as a "braking system" not as a component.

A-LINE® GC2 pads start with premium high-endurance formulations, then add a backing plate with a retention system engineered for high-torque applications, and finish with precision compression and grinding so you receive the highest standards in brake geometry.

BRAKE PADS

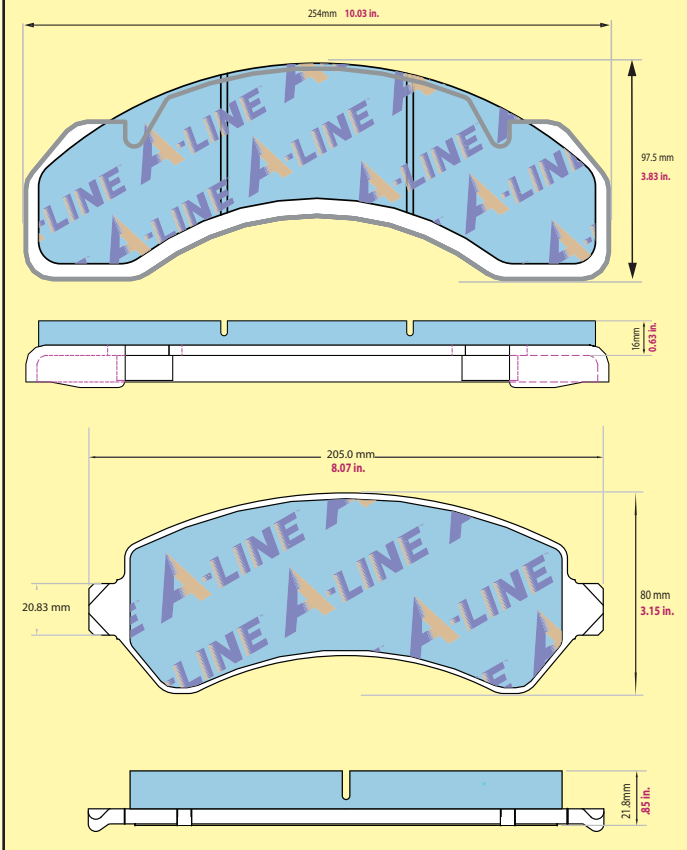
A-Line Part Number	FMSI #	Description	Manufacturer	Model Years
ALP184-GC2	D184-7806	Complete Axle Set of Medium Duty Hydraulic Pads. Fits Bendix-style 2.6" single piston hydraulic caliper 55314. A-LINE #28001	Freightliner, IHC, Thomas	1990-2004
ALP224-GC2	D224-7807	Complete Axle Set of Medium Duty Hydraulic Pads. Fits Dayton-style 2.5" single piston hydraulic caliper 55251. A-LINE #28004	Ford, GM, Meritor	1979-2008
ALP225-GC2	D225-7808	Complete Axle Set of Medium Duty Hydraulic Pads. Fits Bendix-style 2.88" single piston hydraulic caliper 55250. A-LINE #28000	Freightliner, IHC, Thomas	1979-2008
ALP236-GC2	D236-7809	Complete Axle Set of Medium Duty Hydraulic Pads. Fits Bendix-style 2.88" single piston hydraulic caliper 55252. A-LINE #28005	Ford	1983-1999
ALP769-GC2	D769-7636	Complete Axle Set of Medium Duty Hydraulic Pads. Fits Meritor-style 70mm quad piston hydraulic caliper. A-LINE #47119, 47120, 47122	Blue Bird, Ford, Freightliner, GM, Hino, IHC, Sterling, Thomas	2009-2023
ALP786-GC2	D786-7655	Complete Axle Set of Medium Duty Hydraulic Pads (Thick Friction). Fits Bosch-style 73mm dual piston hydraulic caliper 55850. A-LINE #28117	Freightliner, IHC, Sterling, Thomas	1998-2023
ALP786A-GC2	D786A-7654	Complete Axle Set of Medium Duty Hydraulic Pads (Thin Friction). Fits Bosch-style 66mm dual piston hydraulic caliper 55849. A-LINE #28115	Freightliner, IHC, Sterling, Thomas	1985-2023
ALP827-GC2	D827-7699	Complete Axle Set of Medium Duty Hydraulic Pads. Fits TRW-style single piston 57mm hydraulic caliper E14670076-7. A-LINE #24154	Chevy, GMC, Hino, Isuzu NPR NQR	1998-2021
ALP1062-GC2	D1062-7968	Complete Axle Set of Medium Duty Hydraulic Pads. Fits TRW-style two-piston 60mm hydraulic caliper E14670076-7. A-LINE #28082, 28083.	Hino 145, 165, 185	2003-2023
ALP1066-GC2	D1066-7972	Complete Axle Set of Medium Duty Hydraulic Pads. Fits TRW-style twin piston 60mm caliper E14670077. A-LINE #28047	Ford, IHC TerraStar	2005-2023
ALP1683-GC2	D1683-7699	Complete Axle Set of Medium Duty Hydraulic Pads. A-LINE # N/A	Hino 2013-16 195	2013-2023

Bendix, Blue Bird, Bosch, Dayton, Ford, Freightliner, GM, Hino, IHC, Meritor, Sterling, Terrastar, Thomas, TRW and any other brand names are the respective intellectual property of their respective parent corporations and are used for reference purposes only. A-LINE® is a registered trademark of ACR Holdings, LLC. The user of this information should not infer any ownership or affiliation of A-LINE® with any of the aforementioned companies or brands. ©2024 ACR Holdings, LLC. The material in this document is copyrighted and may not be distributed in any form without the express written permission of ACR Holdings, LLC.

A-LINE Medium-Duty Hydraulic Pads ID Chart

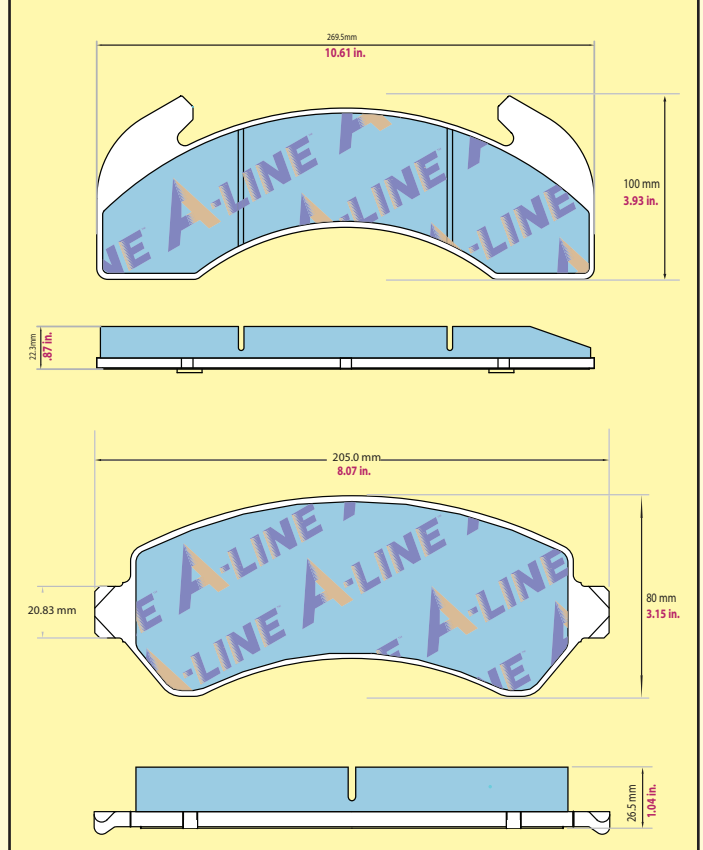
ALP184-GC2

Fits Bendix-style 2.6" single piston hydraulic caliper 55314 A-Line# 28001
Freightliner - International - Thomas



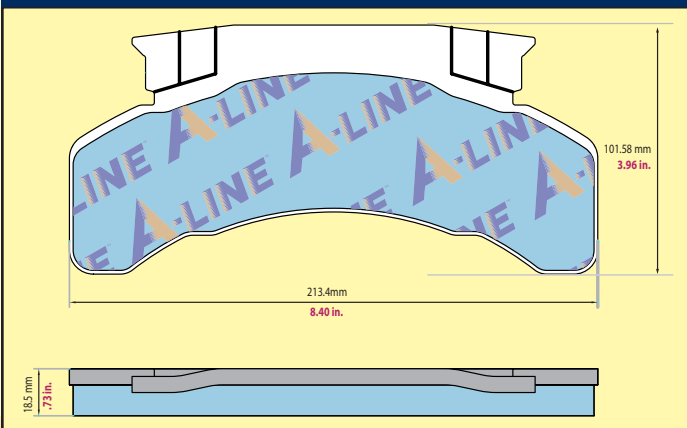
ALP225-GC2

Fits Bendix-style 2.88" single piston hydraulic caliper 55250 A-Line# 28000
Freightliner - International - Thomas



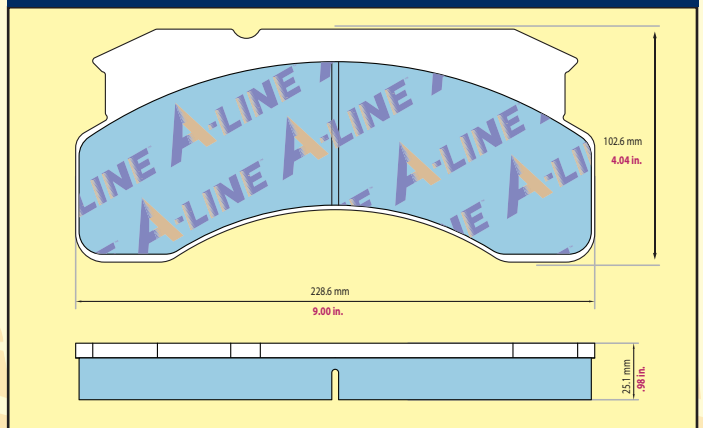
ALP224-GC2

Fits Dayton-style 2.5" single piston hydraulic caliper 55251 A-Line# 28004
Ford - GMC - Meritor



ALP236-GC2

Fits Dayton-style 2.88" single piston hydraulic caliper 55252 A-Line# 28005
Ford



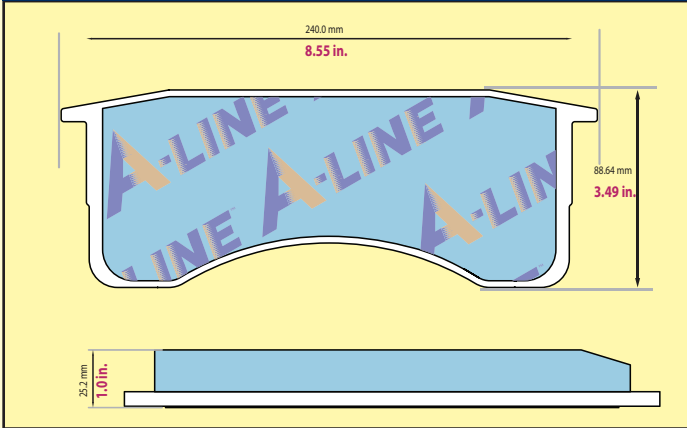
Spec Your A-Line Friction

Competitors will generally use an FMSI number in their friction part numbers, like 786, 769 and 225.

A-Line uses the same method to match those numbers with the FMSI numbers in the A-Line part numbers. Example ALP769-GC2 corresponds to competitors that use 769 in their part number.

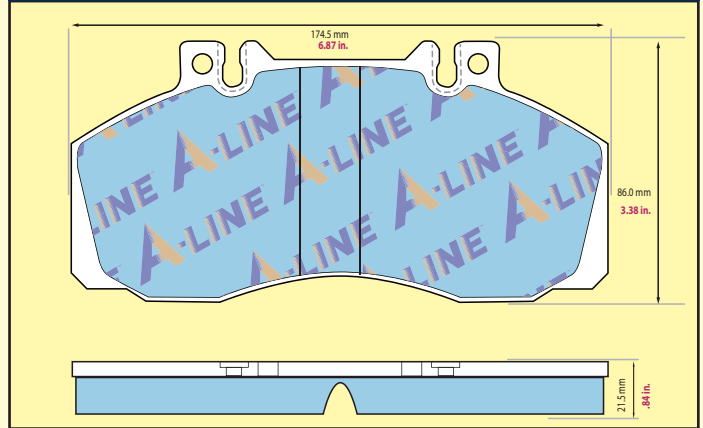
ALP769-GC2

Fits Meritor-style 70mm quad piston hydraulic caliper A-Line# 47119, 47120, 47122
Blue Bird - Freightliner - GM - Sterling - Thomas



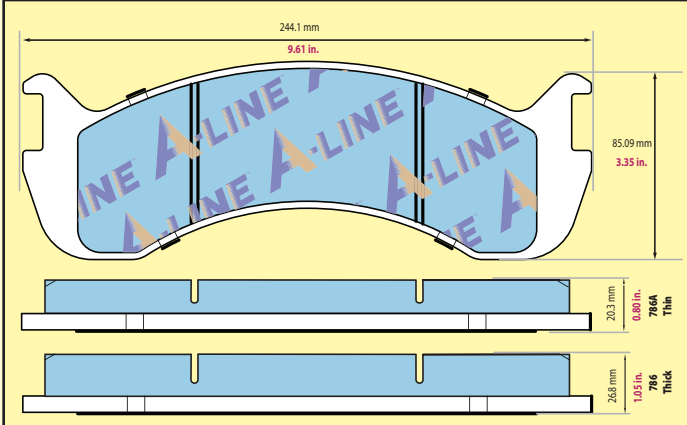
ALP1062-GC2

Fits TRW-style double piston 60mm hydraulic caliper A-Line# 28082, 28083
Hino 145, 165, 185



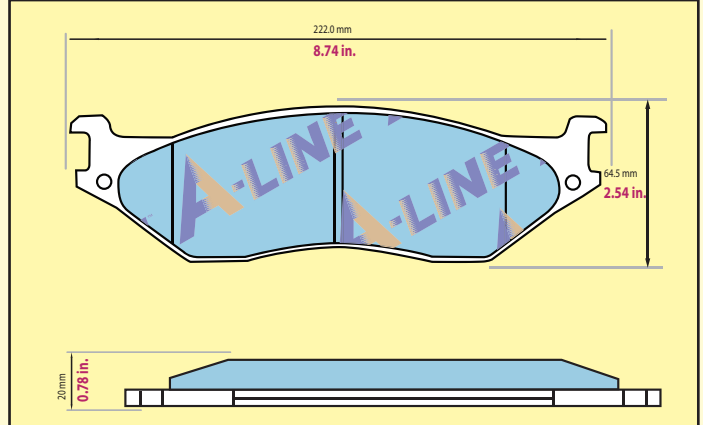
ALP786-GC2 (Thick Friction) ALP786A-GC2 (Thin Friction)

ALP786A-GC2 (Thin) Fits Bosch-style 66mm two piston caliper 55849 A-Line# 27115
ALP786-GC2 (Thick) Fits Bosch-style 73mm two piston caliper 55850 A-Line# 27117
Freightliner - International - Sterling - Thomas



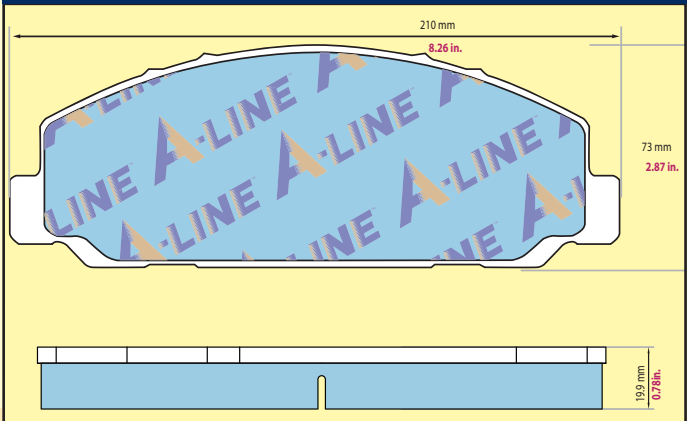
ALP1066-GC2

Fits TRW-style single piston 60mm caliper E14670076-7 A-Line# 28046, 28047
International Terrastar - Ford



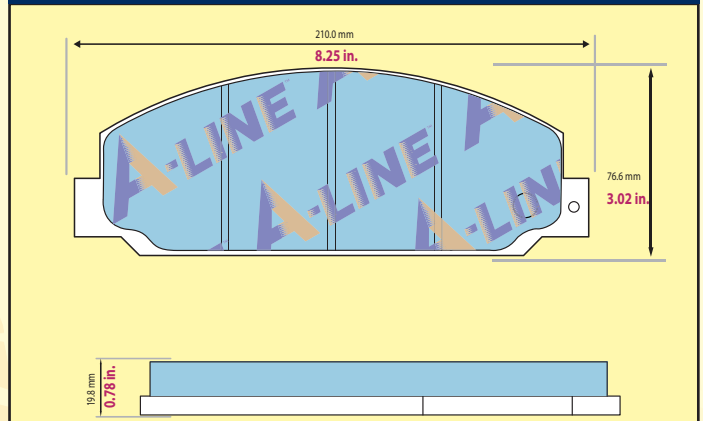
ALP827-GC2

Fits Akebono-style double piston 57mm hydraulic caliper. A-Line# 24154
Chevy, GMC, Isuzu



ALP1683-GC2

Fits Meritor-style four piston hydraulic caliper
Hino 195



BRAKE PADS



4 Features Engineered For a Better Caliper

A-LINE's line of medium duty calipers are engineered to be a lot more than just medium.

We know the severe service that school buses, delivery vehicles and emergency vehicles demand from their hydraulic braking systems.

- 1. High-density pearlite ductile iron castings deliver 80,000 psi of ultimate tensile strength.**
- 2. Customized phenolic resin, fiber-reinforced pistons available.**
- 3. Thermal-resistant EPDM and silicone boots and seals.**
- 4. OE-grade hardware.**

That's why A-LINE uses premium grade D5506 ductile iron and application-specific pistons.

Get the best of OE specs coupled with A-LINE engineering to meet your fleet's most demanding hydraulic braking needs.

Fleets with medium duty hydraulic braking systems know that calipers have to withstand extreme temperatures and pressures.

A-LINE specs every caliper to meet or exceed OE standards for elasticity, thermal elongation and durability.

Every caliper is cast with high tensile strength pearlite ductile iron that has an ultimate tensile strength of 80,000 psi.

This specialized iron allows the caliper to withstand high heats without loss of shape in the bore that can cause piston hangup.

Every seal and boot set is made of high thermal resistant synthetic EPDM or silicone to maintain lubrication in high heat environments.

While each caliper is uniquely manufactured with fiber-reinforced phenolic resin pistons, A-LINE will provide customized pistons to meet the fleet's individual load requirements.

Finally, every A-Line new medium duty hydraulic caliper comes with a two-year warranty against defects in parts and workmanship.



A-Line Medium-Duty Hydraulic Caliper Cross-Reference

A-LINE CALIPER #	FITS A-LINE PAD #	DESCRIPTION	APPLICATION	YRS USED	EUCLID	BENDIX	DAYTON	CASTING
ATC24154	ALP827-GC2	57mm Akebono-style dual piston	Chev - GMC - Isuzu	1998-2021				5702, AD57T
ATC27115	ALP786A-GC2 THIN	66mm Bosch-style dual piston (for thin friction)	IHC - Freightliner - Sterling Thomas	1985-2023	E-11750X	R55849 E14688008	604911	4153269, 66
ATC27117	ALP786-GC2 THICK	73mm Bosch-style dual piston (for thick friction)	IHC - Freightliner - Sterling Thomas	1998-2023	E-11756X	R55850 E14688010	604912	4153222, 73
ATC28000	ALP225-GC2	2.88" Bendix-style dual piston	IHC - Freightliner Thomas	1979-2008	E-4238X	R55250 E14685008	604904	4150844
ATC28001	ALP184-GC2	2.60" Bendix-style dual piston	IHC - Freightliner Thomas	1990-2004	E-4237X	R55314 E14675007	604907	4151020, 2238229, 4151733
ATC28004	ALP224-GC2	2.50" Dayton-style dual piston	GM - Ford Meritor	1979-2008	E-11117X	R55251 E14684106	604905	472, 22602
ATC28005	ALP236-GC2	2.88" Dayton-style dual piston	Ford	1983-1999	E-4245X	R55252 E14684006	604908	456
ATC28046	ALP1066-GC2	60mm TRW-style dual piston RH	IHC - Ford	2005-2023	E-12253	R55861 E14670076		142298
ATC28047	ALP1066-GC2	60mm TRW-style dual piston LH	IHC - Ford	2005-2023	E-12254	R55862 E14670077		142298
ATC28082	ALP1062-GC2	60mm TRW-style dual piston RH	Hino 145, 165, 185	2005-2023	E-12299			
ATC28083	ALP1062-GC2	60mm TRW-style dual piston LH	Hino 145, 165, 185	2005-2023	E-12298			
ATC47119	ALP769-GC2	70mm Meritor-style four piston R - L 2-hole (4 total)	Blue Bird - GMC Freightliner Sterling - Thomas	2000-2023	E-11733-SL E-11734-SL	E14684012 - 3 E14684018 - 9		595-597, 581-583
ATC47120	ALP769-GC2	70mm Meritor-style four piston R - L 3-hole (6 total)	IHC - Ford	2009-2023	E-13706 E-13707	E14688014 E14688015		595-597 9187, 9188
ATC47122	ALP769-GC2	64mm Meritor-style four piston R - L 2-hole (4 total)	IHC - Isuzu, Ford	2009-2023				601, 602, 603





A-LINE CALIPER #	FITS DISC PAD #	DESCRIPTION	APPLICATION	YRS USED	STYLE	PISTONS	BORE	CASTING
ATC24154	ALP827-GC2	57mm Akebono-style dual piston RH	Chev - GMC - Isuzu	1998-2021	1-SLOT	2	57mm	5702, AD57T



A-LINE CALIPER #	FITS DISC PAD #	DESCRIPTION	APPLICATION	YRS USED	STYLE	PISTONS	BORE	CASTING
ATC27115	ALP786A-GC2 THIN	66mm Bosch-style dual piston (for thin friction)	IHC - Freightliner - Sterling Thomas	1985-2023	2-SLOT	2	66mm	4153269, 66



A-LINE CALIPER #	FITS DISC PAD #	DESCRIPTION	APPLICATION	YRS USED	STYLE	PISTONS	BORE	CASTING
ATC27117	ALP786-GC2 THICK	73mm Bosch-style dual piston (for thick friction)	IHC - Freightliner - Sterling Thomas	1998-2023	2-SLOT	2	73mm	4153222, 73



A-LINE CALIPER #	FITS DISC PAD #	DESCRIPTION	APPLICATION	YRS USED	STYLE	PISTONS	BORE	CASTING
ATC28000	ALP225-GC2	2.88" Bendix-style dual piston	IHC - Freightliner Thomas	1979-2008	1-SLOT	2	2.88"	4150844



A-LINE CALIPER #	FITS DISC PAD #	DESCRIPTION	APPLICATION	YRS USED	STYLE	PISTONS	BORE	CASTING
ATC28001	ALP184-GC2	2.60" Bendix-style dual piston	IHC - Freightliner Thomas	1990-2004	1-SLOT	2	2.60"	4151020, 2238229, 4151733



A-LINE CALIPER #	FITS DISC PAD #	DESCRIPTION	APPLICATION	YRS USED	STYLE	PISTONS	BORE	CASTING
ATC28004	ALP224-GC2	2.50" Dayton-style dual piston	GM - Ford Meritor	1979-2008	OPEN CAVITY	2	2.50"	472, 22602



A-LINE CALIPER #	FITS DISC PAD #	DESCRIPTION	APPLICATION	YRS USED	STYLE	PISTONS	BORE	CASTING
ATC28005	ALP236-GC2	2.88" Dayton-style dual piston	Ford	1983-1999	OPEN CAVITY	2	2.88"	456



A-LINE CALIPER #	FITS DISC PAD #	DESCRIPTION	APPLICATION	YRS USED	STYLE	PISTONS	BORE	CASTING
ATC28046	ALP1066-GC2	60mm TRW-style dual piston RH	IHC - Ford	2005-2023	2-SLOT	2	60mm	142298 KH160307

CALIPERS



A-LINE CALIPER #	FITS DISC PAD #	DESCRIPTION	APPLICATION	YRS USED	STYLE	PISTONS	BORE	CASTING
ATC28047	ALP1066-GC2	60mm TRW-style dual piston LH	IHC - Ford	2005-2023	2-SLOT	2	60mm	142298 KH160307



A-LINE CALIPER #	FITS DISC PAD #	DESCRIPTION	APPLICATION	YRS USED	STYLE	PISTONS	BORE	CASTING
ATC28082	ALP1062-GC2	60mm TRW-style dual piston RH	Hino 145, 165, 185	2005-2023	OPEN CAVITY	2	60mm	31320083 83-8 B5C7



A-LINE CALIPER #	FITS DISC PAD #	DESCRIPTION	APPLICATION	YRS USED	STYLE	PISTONS	BORE	CASTING
ATC28083	ALP1062-GC2	60mm TRW-style dual piston LH	Hino 145, 165, 185	2005-2023	OPEN CAVITY	2	60mm	31320083 83-8 B5C7



A-LINE CALIPER #	FITS DISC PAD #	DESCRIPTION	APPLICATION	YRS USED	STYLE	PISTONS	BORE	CASTING
ATC47119	ALP769-GC2	70mm Meritor-style four piston R - L 2-hole (4 total)	Blue Bird - GMC Freightliner Sterling - Thomas	2000-2023	OPEN CAVITY	4	70mm	595-597, 581-583



A-LINE CALIPER #	FITS DISC PAD #	DESCRIPTION	APPLICATION	YRS USED	STYLE	PISTONS	BORE	CASTING
ATC47120	ALP769-GC2	70mm Meritor-style four piston R - L 3-hole (6 total)	IHC - Ford	2009-2023	OPEN CAVITY	4	70mm	595-597 9187, 9188



A-LINE CALIPER #	FITS DISC PAD #	DESCRIPTION	APPLICATION	YRS USED	STYLE	PISTONS	BORE	CASTING
ATC47122	ALP769-GC2	64mm Meritor-style four piston R - L 2-hole (4 total)	IHC - Isuzu, Ford	2009-2023	OPEN CAVITY	4	64mm	601, 602, 603

CALIPERS

MEDIUM DUTY BRAKE CALIPER QUICK REFERENCE



Single Slot

Heavy Duty Brake Caliper identification requires four simple steps.

First, identify the style:

- Single Slot = Bendix
- Twin Slot = Bosch
- Large Cavity = Dayton or Meritor

Second, count the pistons:

- Two = Bendix, Bosch, Dayton
- Four = Meritor

Third, measure the piston bore:

- Standard (2.5, 2.6, 2.88) = Bendix or Dayton
- Metric (66, 70, 73mm) = Bosch or Meritor

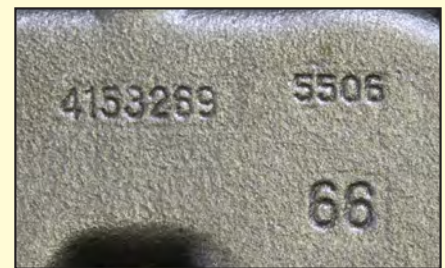
Fourth, count the TOTAL mounting holes:

- None = Bendix or Dayton
- Two = Bosch
- Four or Six = Meritor

Some calipers will have an OE casting number for cross-indexing.



Bore Measurement



Casting Number



Twin Slot



Large Cavity

Style (Top Opening)	Piston Count	Bore Meas.	Mounting Holes	Casting Number	Mfr. Style	A-LINE Disc Pad#	A-LINE Caliper#
Single Slot	Dual	57mm	None	5702, AD57T	Akebono	ALP827-GC2	ATC24154
Single Slot	Dual	2.60"	None	4151733	Bendix	ALP184-GC2	ATC28001
Single Slot	Dual	2.88"	None	4150844	Bendix	ALP225-GC2	ATC28000
Twin Slot	Dual	60mm	2 (1 each side)	142298 KH160307	Bosch	ALP1066-GC2	ATC28046 (RH) ATC28047 (LH)
Twin Slot	Dual	66mm	2 (1 each side)	4153269	Bosch	ALP786A-GC2	ATC27115
Twin Slot	Dual	73mm	2 (1 each side)	4153222	Bosch	ALP786-GC2	ATC27117
Open Cavity	Dual	2.50"	None	22602	Dayton	ALP224-GC2	ATC28004
Open Cavity	Dual	2.88"	None	0456, 0578	Dayton	ALP236-GC2	ATC28005
Open Cavity	Dual	60mm	None	31320083 83-8 B5C7	Meritor	ALP1062-GC2	ATC28082 (RH) ATC28083 (LH)
Open Cavity	Four	70mm	4 (2 each side)	595-597 581-583	Meritor	ALP769-GC2	ATC47119
Open Cavity	Four	70mm	6 (3 each side)	595-597 9187, 9188 (7/16" feeder only)	Meritor	ALP769-GC2	ATC47120
Open Cavity	Four	64mm	4 (2 each side)	601, 602, 603	Meritor	ALP769-GC2	ATC47122



4 Features Engineered For a Better Rotor

A-LINE's line of medium duty rotors are designed and engineered to meet extreme demands, not medium demands.

A-Line hydraulic rotors use specialized metallurgies designed for longer rotor life, reduced wheel end heat, and reduced brake noise.

- 1. High-density grey iron with over 90% pearlite matrix delivers high heat tolerance and longer life.**
- 2. Balanced Carbon and tensile strength allows for thermal resistance**
- 3. Parallel Mill Balancing ensures a balance tolerance of 20 microns or .00078" to reduce noise and brake judder**
- 4. GeoMet Coating protects against rust and corrosion.**

Get the best of OE specs coupled with A-LINE engineering to meet your fleet's most demanding hydraulic braking needs.

A-LINE specs every rotor to be built with a grey iron that exceeds the G3000 standards used in the market today.

Creating a long-lasting rotor starts with a precision blend of metallurgy. A-Line's metallurgical engineers consult with OE teams to determine the best grade of iron alloys for rugged medium-duty braking applications.

Some manufacturers focus on creating high tensile strength rotors that do not wick heat away from the pads.

This results in noisy rotors that can trap heat against the pads, shorten pad life and crack the rotor.

Others focus on adding carbon to the rotor to wick heat away. This eliminates noise by softening the rotor, but results in increased rotor wear.

BALANCING CARBON AND TENSILE STRENGTH

Creating an OE-grade rotor requires a precise mix of carbon and hardening alloys so the rotor can be hard enough to withstand high torque, and have thermal elasticity properties for high heat applications.

PARALLEL MILLING AND BALANCING

Every A-Line rotor is finished with computer controlled parallel milling and balancing. Parallel milling cuts both faces of the rotor simultaneously to a tolerance of 20 microns or .00078". This precision milling eliminates disc thickness variation (DTV) that can cause brake judder.

ISO 1940-1 balancing standards are used to ensure that A-Line rotors are balanced to OE specifications.

GEOMET CORROSION PROTECTION

To extend rotor life and prevent corrosion, A-Line rotors are coated with GeoMet® 360 protection.

This blend of zinc and aluminum oxides interlace and bind to the metal surface so that they are four times more corrosion resistant than zinc-only coatings.

Applied in layers of eight to 10 microns thick, the corrosion-resistant coating resists more than 30 natural and synthetic corrosives, including:

- Acid Wash
- Alcohol
- Ammonia
- Antifreeze
- Brake Clean
- Brake Fluid
- Calcium Chloride
- Diesel
- Gasoline
- Kerosene
- Magnesium Chloride
- Road Salt



Seven Easy Steps to Rotor IDentification

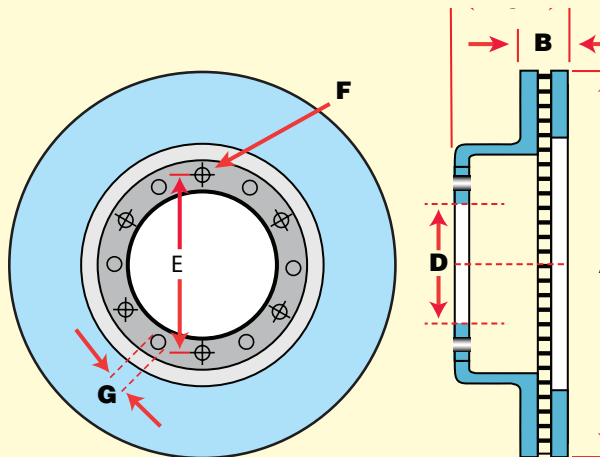
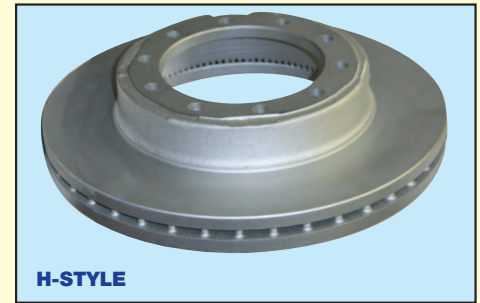
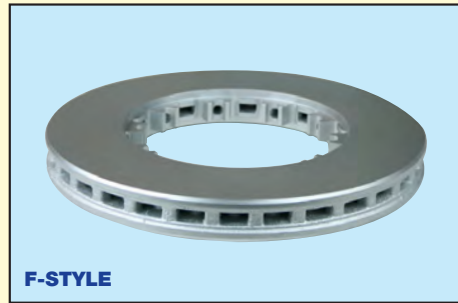
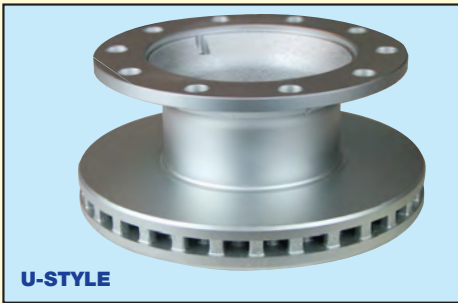
Rotor manufacturers use different part numbers, and vehicle manufacturers may use several different rotors for one application. So the easiest way to find your rotor is to find these measurements:

- A:** Outside Diameter across the face of the disc.
- B:** Rotor Thickness. Minimum is stamped on rotor.
- C:** Overall Rotor Depth.

- D:** Pilot Diameter
- E:** Bolt Circle Diameter measured from center of bolt holes.
- F:** Bolt Hole Size and Count
- G:** Note rotor style and ABS ring configuration. Some rotors will have same measurements but different style.

ROTOR STYLES:

- U-STYLE:** U-style with round bolt flange.
- F-STYLE:** Flat splined rotor.
- H-STYLE:** Hat style rotor.



A-LINE® is a registered trademark of ACR Air Disc, Webb and Dayton are registered trademarks of their respective parent corporations. The use of their names is for reference purposes only and is not meant to imply that A-Line has any ownership or affiliation with any of those manufacturers. Brake technicians are urged to independently verify all information provided in this document regarding the replacement, fit, function or application of brake rotors. © Copyright 2024. No part of this publication may be reproduced in any form without the express written permission of an authorized agent of ACR Air Disc, LLC.

A-Line Part#	A	B	C	D	E	F		G		WEIGHT		Webb#	Dayton	PFC
	OUTSIDE DIA. (mm)	DISC THICKNESS (mm)	OA ROTOR DEPTH (mm)	PILOT DIA. (mm)	BOLT CIRCLE (mm)	BOLT HOLES		STYLE	ABS	Kg	LBS			
	New	SIZE	NUMBER											
ATR393048	390.9	38.9	48.5	187.5	220	0.53"	10	F	No	18.2	40	54325	125937	390.048.20
ATR393120	390.9	38.9	86.4	152.4	184.1	0.53"	10	H	No	19.09	42	54301	122729	
ATR393203	390.9	39.1	103	231.6	285.7	0.94"	10	U	Yes	27.72	61	54365	123574	
ATR394137	381	36.3	81.2	152.4	190.5	0.58	10	H	Yes	17.27	38	54773	123550	381.081.20
ATR396139	381	36.5	88.9	137.1	171.45	0.78	5	H	Yes	17.27	38	54769	123573	381.089.20
ATR400130	391	38.9	86.36	152.4	184.15	0.758	10	H	Yes	19.45	43	54775	123557	390.086.20
ATR406138	381	36.5	88.9	137.16	171.45	0.77"	6	H	Yes	18.2	40	54770	123572	381.089.30
ATR407145	381	36.5	112.8	152.4	184.1	0.58"	10	H	Yes	19.09	42	54771	123552	381.113.20

Find Your Pad And Caliper By Vehicle Make, Model and Year

A-LINE PAD#	FITS YEAR	MAKE/MODEL	DESCRIPTION	A-LINE CALIPER#
ALP769-GC2	1999-2018	Blue Bird All American FE	Fits Meritor 70mm 4-piston with 2 holes. Fits Meritor 70mm 4-piston with 3 holes. Fits Meritor 64mm 4-piston with 2 holes.	ATC47119 ATC47120 ATC47122
ALP225-GC2	1998-2000	Blue Bird TC1000	2.88" Bendix-style dual piston	ATC28000
ALP225-GC2	1993-2004	Blue Bird TC2000	2.88" Bendix-style dual piston	ATC28000
ALP769-GC2	1997-2000	Blue Bird TC1000	Fits Meritor 70mm 4-piston with 2 holes. Fits Meritor 70mm 4-piston with 3 holes. Fits Meritor 64mm 4-piston with 2 holes.	ATC47119 ATC47120 ATC47123
ALP786-GC2	1998-2004	Blue Bird TC2000	73mm dual piston Bosch	ATC27115
ALP786A-GC2	1998-2004	Blue Bird TC2000	66mm dual piston Bosch	ATC27115
ALP769-GC2	1998-2004	Blue Bird TC2000	Fits Meritor 70mm 4-piston with 2 holes. Fits Meritor 70mm 4-piston with 3 holes. Fits Meritor 64mm 4-piston with 2 holes.	ATC47119 ATC47120 ATC47124
ALP769-GC2	2004-2018	Blue Bird VISION	Fits Meritor 70mm 4-piston with 2 holes. Fits Meritor 70mm 4-piston with 3 holes. Fits Meritor 64mm 4-piston with 2 holes.	ATC47119 ATC47120 ATC47125
ALP224-GC2	1993-2002	Chevrolet & GMC B7	2.5" Dayton-style dual piston	ATC28004
ALP225-GC2	1993-2002	Chevrolet & GMC B7	2.88" Bendix-style dual piston	ATC28000
ALP225-GC2	1997-2002	Chevrolet & GMC T6500	2.88" Bendix-style dual piston	ATC28000
ALP225-GC2	1997-2002	Chevrolet & GMC T7500	2.88" Bendix-style dual piston	ATC28000
ALP224-GC2	1991	Chevrolet B60	2.5" Dayton-style dual piston	ATC28004
ALP225-GC2	1991	Chevrolet B60	2.88" Bendix-style dual piston	ATC28000
ALP224-GC2	1989	Chevrolet C50	2.5" Dayton-style dual piston	ATC28004
ALP225-GC2	1990	Chevrolet C50	2.88" Bendix-style dual piston	ATC28000
ALP224-GC2	1991	Chevrolet C5500 Kodiak	2.5" Dayton-style dual piston	ATC28004
ALP224-GC2	1989-1996	Chevrolet C60	2.5" Dayton-style dual piston	ATC28004
ALP225-GC2	1990	Chevrolet C60	2.88" Bendix-style dual piston	ATC28000
ALP225-GC2	1990-1996	Chevrolet C60 Kodiak	2.88" Bendix-style dual piston	ATC28000
ALP224-GC2	1997-2002	Chevrolet C6500 Kodiak	2.5" Dayton-style dual piston	ATC28004
ALP225-GC2	1997-2002	Chevrolet C6500 Kodiak	2.88" Bendix-style dual piston	ATC28000
ALP224-GC2	1989-1996	Chevrolet C70	2.5" Dayton-style dual piston	ATC28004
ALP225-GC2	1990	Chevrolet C70	2.88" Bendix-style dual piston	ATC28000
ALP225-GC2	1991-1996	Chevrolet C70 Kodiak	2.88" Bendix-style dual piston	ATC28000
ALP224-GC2	1997-2002	Chevrolet C7500 Kodiak	2.5" Dayton-style dual piston	ATC28004
ALP225-GC2	1997-2002	Chevrolet C7500 Kodiak	2.88" Bendix-style dual piston	ATC28000
ALP224-GC2	1992-1996	Chevrolet P6000	2.5" Dayton-style dual piston	ATC28004
ALP225-GC2	1992-1994	Chevrolet P6000	2.88" Bendix-style dual piston	ATC28000
ALP224-GC2	1997-2002	Chevrolet T6500	2.5" Dayton-style dual piston	ATC28004
ALP224-GC2	1997-2002	Chevrolet T7500	2.5" Dayton-style dual piston	ATC28004
ALP769-GC2	2003-2009	Chevy & GMC C4500 W 8K & 9K AXLE, C5500	Fits Meritor 70mm 4-piston with 2 holes. Fits Meritor 70mm 4-piston with 3 holes. Fits Meritor 64mm 4-piston with 2 holes.	ATC47119 ATC47120 ATC47126

A-LINE PAD#	FITS YEAR	MAKE/MODEL	DESCRIPTION	A-LINE CALIPER#
ALP769-GC2	1997-2009	Chevy & GMC C6500	Fits Meritor 70mm 4-piston with 2 holes. Fits Meritor 70mm 4-piston with 3 holes. Fits Meritor 64mm 4-piston with 2 holes.	ATC47119 ATC47120 ATC47128
ALP769-GC2	2004-2009	Chevy & GMC T6500, T7500 & T8500 (Chevy ONLY)	Fits Meritor 70mm 4-piston with 2 holes. Fits Meritor 70mm 4-piston with 3 holes. Fits Meritor 64mm 4-piston with 2 holes.	ATC47119 ATC47120 ATC47131
ALP827-GC2	1998-2010	Chevy & GMC W4500, W5500	57mm Akebono 2 piston	ATC24154
ALP769-GC2	1990-1996	Chevy & GMCC60	Fits Meritor 70mm 4-piston with 2 holes. Fits Meritor 70mm 4-piston with 3 holes. Fits Meritor 64mm 4-piston with 2 holes.	ATC47119 ATC47120 ATC47127
ALP769-GC2	2002-2009	Chevy & GMC C7500	Fits Meritor 70mm 4-piston with 2 holes. Fits Meritor 70mm 4-piston with 3 holes. Fits Meritor 64mm 4-piston with 2 holes.	ATC47119 ATC47120 ATC47129
ALP184-GC2	1994-2000	Chevy C3500, C3500HD	2.60" Bendix Dual piston	ATC28001
ALP184-GC2	1988-1990	Chevy C50, C60	2.60" Bendix Dual piston	ATC28001
ALP184-GC2	1988-1989	Chevy C70	2.60" Bendix Dual piston	ATC28001
ALP827-GC2	2018-2021	Chevy LCF4500XD, LCF5500XD	57mm Akebono 2 piston	ATC24154
ALP184-GC2	1997-1999	Chevy P30	2.60" Bendix Dual piston	ATC28001
ALP827-GC2	1998-2009	Chevy W3500	57mm Akebono 2 piston	ATC24154
ALP224-GC2	1989-1994	Ford B-600	2.5" Dayton-style dual piston	ATC28004
ALP224-GC2	1989-1994	Ford B-700	2.5" Dayton-style dual piston	ATC28004
ALP224-GC2	1989	Ford C800	2.5" Dayton-style dual piston	ATC28004
ALP224-GC2	1989-1990	Ford C8000	2.5" Dayton-style dual piston	ATC28004
ALP236-GC2	1990	Ford C8000	2.88" Dayton-style dual piston	ATC28005
ALP1066-GC2	2002-2003	Ford E550	60mm TRW-style dual piston	ATC28046 (RH) ATC28047 (LH)
ALP224-GC2	1989-1994	Ford F-600	2.5" Dayton-style dual piston	ATC28004
ALP224-GC2	1990-1994	Ford F-600 LPO	2.5" Dayton-style dual piston	ATC28004
ALP224-GC2	1990-2003	Ford F-650	2.5" Dayton-style dual piston	ATC28004
ALP224-GC2	1990-1998	Ford F-700 LPO	2.5" Dayton-style dual piston	ATC28004
ALP224-GC2	2000-2003	Ford F-750	2.5" Dayton-style dual piston	ATC28004
ALP224-GC2	1990-1999	Ford F-800	2.5" Dayton-style dual piston	ATC28004
ALP224-GC2	1995-1998	Ford F-800 LPO	2.5" Dayton-style dual piston	ATC28004
ALP1066-GC2	1999-2016	Ford F450, F550	60mm TRW-style dual piston	ATC28046 (RH) ATC28047 (LH)
ALP786-GC2	2016-2022	Ford F53	73mm dual piston Bosch	ATC27115
ALP786A-GC2	2016-2022	Ford F53	66mm dual piston Bosch	ATC27115
ALP1066-GC2	1999-2021	Ford F53, F59	60mm TRW-style dual piston	ATC28046 (RH) ATC28047 (LH)
ALP769-GC2	2000-2003 2009-2013 2015-2019 2021-2023	Ford F650 & F750	Fits Meritor 70mm 4-piston with 2 holes. Fits Meritor 70mm 4-piston with 3 holes. Fits Meritor 64mm 4-piston with 2 holes.	ATC47119 ATC47120 ATC47132
ALP786-GC2	2004-2008	Ford F650, F750	73mm dual piston Bosch	ATC27115
ALP786A-GC2	2004-2008	Ford F650, F750	66mm dual piston Bosch	ATC27115
ALP224-GC2	1990	Ford FT800	2.5" Dayton-style dual piston	ATC28004
ALP236-GC2	1990	Ford FT800	2.88" Dayton-style dual piston	ATC28005
ALP224-GC2	1990-1994	Ford L8000F	2.5" Dayton-style dual piston	ATC28004
ALP236-GC2	1990-1993	Ford L8000F	2.88" Dayton-style dual piston	ATC28005
ALP224-GC2	1990-1994	Ford L9000	2.5" Dayton-style dual piston	ATC28004
ALP236-GC2	1990-1997	Ford L9000	2.88" Dayton-style dual piston	ATC28005

A-LINE PAD#	FITS YEAR	MAKE/MODEL	DESCRIPTION	A-LINE CALIPER#
ALP236-GC2	1993	Ford LA8000F	2.88" Dayton-style dual piston	ATC28005
ALP236-GC2	1990-1997	Ford LA9000	2.88" Dayton-style dual piston	ATC28005
ALP1066-GC2	2006-2009	Ford LCF	60mm TRW-style dual piston	ATC28046 (RH) ATC28047 (LH)
ALP236-GC2	1990-1996	Ford LL9000	2.88" Dayton-style dual piston	ATC28005
ALP236-GC2	1997	Ford LLA9000	2.88" Dayton-style dual piston	ATC28005
ALP236-GC2	1992-1996	Ford LLA9000	2.88" Dayton-style dual piston	ATC28005
ALP236-GC2	1994-1996	Ford LLS9000	2.88" Dayton-style dual piston	ATC28005
ALP224-GC2	1990-1997	Ford LN7000	2.5" Dayton-style dual piston	ATC28004
ALP236-GC2	1990-1997	Ford LN7000	2.88" Dayton-style dual piston	ATC28005
ALP224-GC2	1991-1997	Ford LN8000	2.5" Dayton-style dual piston	ATC28004
ALP236-GC2	1990-1997	Ford LN8000	2.88" Dayton-style dual piston	ATC28005
ALP224-GC2	1997	Ford LN9000	2.5" Dayton-style dual piston	ATC28004
ALP224-GC2	1991-1996	Ford LN9000	2.5" Dayton-style dual piston	ATC28004
ALP236-GC2	1990-1997	Ford LN9000	2.88" Dayton-style dual piston	ATC28005
ALP236-GC2	1990-1997	Ford LNT9000	2.88" Dayton-style dual piston	ATC28005
ALP236-GC2	1993	Ford LS8000F	2.88" Dayton-style dual piston	ATC28005
ALP236-GC2	1990-1997	Ford LS9000	2.88" Dayton-style dual piston	ATC28005
ALP236-GC2	1990-1997	Ford LT9000	2.88" Dayton-style dual piston	ATC28005
ALP236-GC2	1990-1997	Ford LTL9000	2.88" Dayton-style dual piston	ATC28005
ALP184-GC2	2000-2003	Freightliner FL50, MT45, MT55	2.60" Bendix Dual piston	ATC28001
ALP786-GC2	1999-2006	Freightliner BUS FS65	73mm dual piston Bosch	ATC27115
ALP786A-GC2	1999-2006	Freightliner BUS FS65	66mm dual piston Bosch	ATC27115
ALP184-GC2	1997	Freightliner BUS FS65	2.60" Bendix Dual piston	ATC28001
ALP184-GC2	1996-2006	Freightliner BUS MB	2.60" Bendix Dual piston	ATC28001
ALP786-GC2	1999-2005	Freightliner FL50	73mm dual piston Bosch	ATC27115
ALP786A-GC2	1999-2005	Freightliner FL50	66mm dual piston Bosch	ATC27115
ALP184-GC2	2004	Freightliner FL50	2.60" Bendix Dual piston	ATC28001
ALP225-GC2	1995-2005	Freightliner FL50	2.88" Bendix-style dual piston	ATC28000
ALP769-GC2	1995-2005	Freightliner FL50	Fits Meritor 70mm 4-piston with 2 holes. Fits Meritor 70mm 4-piston with 3 holes. Fits Meritor 64mm 4-piston with 2 holes.	ATC47119 ATC47120 ATC47133
ALP184-GC2	1994-1999	Freightliner FL50, FL60, FL70	2.60" Bendix Dual piston	ATC28001
ALP225-GC2	1992-2005	Freightliner FL60	2.88" Bendix-style dual piston	ATC28000
ALP769-GC2	1991-2004	Freightliner FL60	Fits Meritor 70mm 4-piston with 2 holes. Fits Meritor 70mm 4-piston with 3 holes. Fits Meritor 64mm 4-piston with 2 holes.	ATC47119 ATC47120 ATC47134
ALP184-GC2	1992-1993	Freightliner FL60, FL70	2.60" Bendix Dual piston	ATC28001
ALP786-GC2	2000	Freightliner FL70	73mm dual piston Bosch	ATC27115
ALP786A-GC2	2000	Freightliner FL70	66mm dual piston Bosch	ATC27115
ALP184-GC2	2000	Freightliner FL70	2.60" Bendix Dual piston	ATC28001
ALP225-GC2	1992-2005	Freightliner FL70	2.88" Bendix-style dual piston	ATC28000
ALP769-GC2	1991-2005	Freightliner FL70	Fits Meritor 70mm 4-piston with 2 holes. Fits Meritor 70mm 4-piston with 3 holes. Fits Meritor 64mm 4-piston with 2 holes.	ATC47119 ATC47120 ATC47135
ALP225-GC2	1997-1998	Freightliner FS65	2.88" Bendix-style dual piston	ATC28000
ALP786-GC2	2002-2010	Freightliner M2 100	73mm dual piston Bosch	ATC27115
ALP786A-GC2	2002-2010	Freightliner M2 100	66mm dual piston Bosch	ATC27115
ALP786-GC2	2003-2013	Freightliner M2 106	73mm dual piston Bosch	ATC27115
ALP786A-GC2	2003-2013	Freightliner M2 106	66mm dual piston Bosch	ATC27115

A-LINE PAD#	FITS YEAR	MAKE/MODEL	DESCRIPTION	A-LINE CALIPER#
ALP225-GC2	1996-2006	Freightliner MB Line	2.88" Bendix-style dual piston	ATC28000
ALP225-GC2	1992-1995	Freightliner MB60	2.88" Bendix-style dual piston	ATC28000
ALP184-GC2	1994-1995	Freightliner MB60, MB70	2.60" Bendix Dual piston	ATC28001
ALP224-GC2	1997-2005	Freightliner MT35	2.5" Dayton-style dual piston	ATC28004
ALP184-GC2	2000-2005	Freightliner MT35, MT45	2.60" Bendix Dual piston	ATC28001
ALP184-GC2	1999	Freightliner MT35, MT45, MT55	2.60" Bendix Dual piston	ATC28001
ALP786-GC2	2004-2019	Freightliner MT45	73mm dual piston Bosch	ATC27115
ALP786A-GC2	2004-2019	Freightliner MT45	66mm dual piston Bosch	ATC27115
ALP224-GC2	1998-2005	Freightliner MT45	2.5" Dayton-style dual piston	ATC28004
ALP786-GC2	2004-2018	Freightliner MT55	73mm dual piston Bosch	ATC27115
ALP786A-GC2	2004-2018	Freightliner MT55	66mm dual piston Bosch	ATC27115
ALP225-GC2	1999-2003	Freightliner MT55	2.88" Bendix-style dual piston	ATC28000
ALP224-GC2	199-1991	GMC B6000	2.5" Dayton-style dual piston	ATC28004
ALP225-GC2	1991	GMC B6000	2.88" Bendix-style dual piston	ATC28000
ALP184-GC2	1994-1997	GMC C3500	2.60" Bendix Dual piston	ATC28001
ALP184-GC2	1995-1999	GMC C3500, C3500HD	2.60" Bendix Dual piston	ATC28001
ALP184-GC2	2001-2002	GMC C3500HD	2.60" Bendix Dual piston	ATC28001
ALP224-GC2	1990-1991	GMC C5000 Topkick	2.5" Dayton-style dual piston	ATC28004
ALP225-GC2	1991	GMC C5000 Topkick	2.88" Bendix-style dual piston	ATC28000
ALP184-GC2	1988-1990	GMC C5000, C6000, P4500	2.60" Bendix Dual piston	ATC28001
ALP224-GC2	1990-1996	GMC C6000	2.5" Dayton-style dual piston	ATC28004
ALP225-GC2	1990-1996	GMC C6000 Topkick	2.88" Bendix-style dual piston	ATC28000
ALP224-GC2	1997-2002	GMC C6500 Topkick	2.5" Dayton-style dual piston	ATC28004
ALP184-GC2	1989	GMC C7000	2.60" Bendix Dual piston	ATC28001
ALP224-GC2	1990-1996	GMC C7000	2.5" Dayton-style dual piston	ATC28004
ALP225-GC2	1991-1996	GMC C7000 Topkick	2.88" Bendix-style dual piston	ATC28000
ALP224-GC2	1997-2002	GMC C7500 Topkick	2.5" Dayton-style dual piston	ATC28004
ALP225-GC2	1997-2002	GMC C7500 Topkick	2.88" Bendix-style dual piston	ATC28000
ALP184-GC2	1994	GMC K3500	2.60" Bendix Dual piston	ATC28001
ALP184-GC2	1997-1999	GMC P3500	2.60" Bendix Dual piston	ATC28001
ALP224-GC2	1990	GMC P4500	2.5" Dayton-style dual piston	ATC28004
ALP224-GC2	1992-1996	GMC P6500	2.5" Dayton-style dual piston	ATC28004
ALP225-GC2	1992-1996	GMC P6500	2.88" Bendix-style dual piston	ATC28000
ALP224-GC2	1997-2002	GMC T6500	2.5" Dayton-style dual piston	ATC28004
ALP224-GC2	1997-2002	GMC T7500	2.5" Dayton-style dual piston	ATC28004
ALP1062-GC2	2005-2010	Hino 145, 165, 185	60mm TRW-style dual piston RH	ATC28082 (RH) ATC28083 (LH)
ALP1683-GC2	2012-2020	Hino 195	Akebono-style 57mm dual piston	NA
ALP769-GC2	2005-2010 2012-2014	Hino 238	Fits Meritor 70mm 4-piston with 2 holes. Fits Meritor 70mm 4-piston with 3 holes. Fits Meritor 64mm 4-piston with 2 holes.	ATC47119 ATC47120 ATC47136
ALP769-GC2	2006-2017	Hino 258	Fits Meritor 70mm 4-piston with 2 holes. Fits Meritor 70mm 4-piston with 3 holes. Fits Meritor 64mm 4-piston with 2 holes.	ATC47119 ATC47120 ATC47137
ALP769-GC2	2008-2011	Hino 258ALP	Fits Meritor 70mm 4-piston with 2 holes. Fits Meritor 70mm 4-piston with 3 holes. Fits Meritor 64mm 4-piston with 2 holes.	ATC47119 ATC47120 ATC47138
ALP769-GC2	2006-2014	Hino 258LP	Fits Meritor 70mm 4-piston with 2 holes. Fits Meritor 70mm 4-piston with 3 holes. Fits Meritor 64mm 4-piston with 2 holes.	ATC47119 ATC47120 ATC47139

A-LINE PAD#	FITS YEAR	MAKE/MODEL	DESCRIPTION	A-LINE CALIPER#
ALP769-GC2	2005-2016	Hino 268	Fits Meritor 70mm 4-piston with 2 holes. Fits Meritor 70mm 4-piston with 3 holes. Fits Meritor 64mm 4-piston with 2 holes.	ATC47119 ATC47120 ATC47140
ALP769-GC2	2008-2012	Hino 268A	Fits Meritor 70mm 4-piston with 2 holes. Fits Meritor 70mm 4-piston with 3 holes. Fits Meritor 64mm 4-piston with 2 holes.	ATC47119 ATC47120 ATC47141
ALP769-GC2	2005-2006 2008	Hino 338	Fits Meritor 70mm 4-piston with 2 holes. Fits Meritor 70mm 4-piston with 3 holes. Fits Meritor 64mm 4-piston with 2 holes.	ATC47119 ATC47120 ATC47142
ALP184-GC2	1990-1997	IC Bus 3000, 3000FE, 3000RE, 3400, 3600, 2800	2.60" Bendix Dual piston	ATC28001
ALP1066-GC2	2012-2015	IC Bus AE, AC Commercial	60mm TRW-style dual piston	ATC28046 (RH) ATC28047 (LH)
ALP769-GC2	2010-2015	IC Bus BE & IC INTERGRATED CE	Fits Meritor 70mm 4-piston with 2 holes. Fits Meritor 70mm 4-piston with 3 holes. Fits Meritor 64mm 4-piston with 2 holes.	ATC47119 ATC47120 ATC47143
ALP786-GC2	2006-2009	IC Bus BE, RE, CE Integrated, CE Integrated Commercial	73mm dual piston Bosch	ATC27115
ALP786A-GC2	2006-2009	IC Bus BE, RE, CE Integrated, CE Integrated Commercial	66mm dual piston Bosch	ATC27115
ALP786-GC2	2009-2010	IC Bus CE	73mm dual piston Bosch	ATC27115
ALP786A-GC2	2009-2010	IC Bus CE	66mm dual piston Bosch	ATC27115
ALP786-GC2	2007-2008	IC Bus HC Integrated	73mm dual piston Bosch	ATC27115
ALP786A-GC2	2007-2008	IC Bus HC Integrated	66mm dual piston Bosch	ATC27115
ALP786-GC2	2004-2005	IC Bus RE, CE Integrated, CE Integrated Commercial	73mm dual piston Bosch	ATC27115
ALP786A-GC2	2004-2005	IC Bus RE, CE Integrated, CE Integrated Commercial	66mm dual piston Bosch	ATC27115
ALP786-GC2		IC Bus RE, CE, CE Commercial	73mm dual piston Bosch	ATC27115
ALP786A-GC2		IC Bus RE, CE, CE Commercial	66mm dual piston Bosch	ATC27115
ALP769-GC2	2010-2017	IC Commercial CE & IC Bus CE	Fits Meritor 70mm 4-piston with 2 holes. Fits Meritor 70mm 4-piston with 3 holes. Fits Meritor 64mm 4-piston with 2 holes.	ATC47119 ATC47120 ATC47144
ALP769-GC2	2010-2018	IC Commercial RE & IC Bus RE	Fits Meritor 70mm 4-piston with 2 holes. Fits Meritor 70mm 4-piston with 3 holes. Fits Meritor 64mm 4-piston with 2 holes.	ATC47119 ATC47120 ATC47146
ALP769-GC2	2010-2016	IC Integrated HC	Fits Meritor 70mm 4-piston with 2 holes. Fits Meritor 70mm 4-piston with 3 holes. Fits Meritor 64mm 4-piston with 2 holes.	ATC47119 ATC47120 ATC47145
ALP769-GC2	2009-2011	INTERNATIONAL 3200 & 3300	Fits Meritor 70mm 4-piston with 2 holes. Fits Meritor 70mm 4-piston with 3 holes. Fits Meritor 64mm 4-piston with 2 holes.	ATC47119 ATC47120 ATC47147
ALP769-GC2	2009-2012	INTERNATIONAL 4100	Fits Meritor 70mm 4-piston with 2 holes. Fits Meritor 70mm 4-piston with 3 holes. Fits Meritor 64mm 4-piston with 2 holes.	ATC47119 ATC47120 ATC47148
ALP769-GC2	2009-2010	INTERNATIONAL 4200	Fits Meritor 70mm 4-piston with 2 holes. Fits Meritor 70mm 4-piston with 3 holes. Fits Meritor 64mm 4-piston with 2 holes.	ATC47119 ATC47120 ATC47149
ALP769-GC2	2009-2019	INTERNATIONAL 4300 & 4300LP	Fits Meritor 70mm 4-piston with 2 holes. Fits Meritor 70mm 4-piston with 3 holes. Fits Meritor 64mm 4-piston with 2 holes.	ATC47119 ATC47120 ATC47150
ALP769-GC2	2009-2020	INTERNATIONAL 4400 & 4400LP	Fits Meritor 70mm 4-piston with 2 holes. Fits Meritor 70mm 4-piston with 3 holes. Fits Meritor 64mm 4-piston with 2 holes.	ATC47119 ATC47120 ATC47151
ALP225-GC2	1990-1992	International Harvester 1452SC	2.88" Bendix-style dual piston	ATC28000
ALP225-GC2	1990-1998	International Harvester 1652SC	2.88" Bendix-style dual piston	ATC28000

A-LINE PAD#	FITS YEAR	MAKE/MODEL	DESCRIPTION	A-LINE CALIPER#
ALP225-GC2	1995-1997	International Harvester 3000	2.88" Bendix-style dual piston	ATC28000
ALP225-GC2	1996-1997	International Harvester 3400	2.88" Bendix-style dual piston	ATC28000
ALP225-GC2	1992-1997	International Harvester 3600	2.88" Bendix-style dual piston	ATC28000
ALP225-GC2	1990-1997	International Harvester 3700	2.88" Bendix-style dual piston	ATC28000
ALP225-GC2	1990-1997	International Harvester 3800	2.88" Bendix-style dual piston	ATC28000
ALP225-GC2	1991-1993	International Harvester 3900FC	2.88" Bendix-style dual piston	ATC28000
ALP225-GC2	1990-1995	International Harvester 4600	2.88" Bendix-style dual piston	ATC28000
ALP225-GC2	1990-1994	International Harvester 4600LP	2.88" Bendix-style dual piston	ATC28000
ALP225-GC2	1990	International Harvester 4600UH	2.88" Bendix-style dual piston	ATC28000
ALP225-GC2	1990-1997	International Harvester 4700	2.88" Bendix-style dual piston	ATC28000
ALP225-GC2	1990-1997	International Harvester 4700LP	2.88" Bendix-style dual piston	ATC28000
ALP225-GC2	1995-1997	International Harvester 4700LPX	2.88" Bendix-style dual piston	ATC28000
ALP225-GC2	1990-1997	International Harvester 4800	2.88" Bendix-style dual piston	ATC28000
ALP225-GC2	1990-1997	International Harvester 4900	2.88" Bendix-style dual piston	ATC28000
ALP224-GC2	1997-2002	Isuzu FSR	2.5" Dayton-style dual piston	ATC28004
ALP225-GC2	1996-2002	Isuzu FSR	2.88" Bendix-style dual piston	ATC28000
ALP224-GC2	1996-2002	Isuzu FTR	2.5" Dayton-style dual piston	ATC28004
ALP225-GC2	1996-2002	Isuzu FTR	2.88" Bendix-style dual piston	ATC28000
ALP769-GC2	2003-2009	Isuzu FTR & FVR (Also 2010 & 2011 FTR)	Fits Meritor 70mm 4-piston with 2 holes. Fits Meritor 70mm 4-piston with 3 holes. Fits Meritor 64mm 4-piston with 2 holes.	ATC47119 ATC47120 ATC47152
ALP827-GC2	1998-2021	Isuzu FTR, NPRHD	57mm Akebono 2 piston	ATC24154
ALP224-GC2	1996-2002	Isuzu FVR	2.5" Dayton-style dual piston	ATC28004
ALP225-GC2	1997-2002	Isuzu FVR	2.88" Bendix-style dual piston	ATC28000
ALP769-GC2	2007-2008	Isuzu FXR	Fits Meritor 70mm 4-piston with 2 holes. Fits Meritor 70mm 4-piston with 3 holes. Fits Meritor 64mm 4-piston with 2 holes.	ATC47119 ATC47120 ATC47153
ALP769-GC2	2005-2008	Isuzu HTR & HVR	Fits Meritor 70mm 4-piston with 2 holes. Fits Meritor 70mm 4-piston with 3 holes. Fits Meritor 64mm 4-piston with 2 holes.	ATC47119 ATC47120 ATC47154
ALP827-GC2	1998-2020	Isuzu NRR, NQR	57mm Akebono 2 piston	ATC24154
ALP184-GC2	1993-1999	Kenworth K300	2.60" Bendix Dual piston	ATC28001
ALP225-GC2	1994-1999	Kenworth K300	2.88" Bendix-style dual piston	ATC28000
ALP786-GC2	2008-2012	Kenworth T170	73mm dual piston Bosch	ATC27115
ALP786A-GC2	2008-2012	Kenworth T170	66mm dual piston Bosch	ATC27115
ALP786-GC2	2008-2017	Kenworth T270, T370	73mm dual piston Bosch	ATC27115
ALP786A-GC2	2008-2017	Kenworth T270, T370	66mm dual piston Bosch	ATC27115
ALP184-GC2	1998-2000	Kenworth T300	2.60" Bendix Dual piston	ATC28001
ALP225-GC2	1999	Kenworth T300	2.88" Bendix-style dual piston	ATC28000
ALP225-GC2	1991-2001	Mack CS200P Mid-Liner	2.88" Bendix-style dual piston	ATC28000
ALP225-GC2	1990-2001	Mack MS200P Mid-Liner	2.88" Bendix-style dual piston	ATC28000
ALP225-GC2	1991-2001	Mack MS250P Mid-Liner	2.88" Bendix-style dual piston	ATC28000
ALP225-GC2	1990-2001	Mack MS300P Mid-Liner	2.88" Bendix-style dual piston	ATC28000
ALP225-GC2	1990-1996	Mack MS300T Mid-Liner	2.88" Bendix-style dual piston	ATC28000
ALP184-GC2	1989-1990	Navistar 1452SC	2.60" Bendix Dual piston	ATC28001
ALP184-GC2	1979-1989	Navistar 1654, 1754, 1854, 1954, 1955, 2155, 2375S, M1400, S1753, S1754, S1853, S1954, S1955	2.60" Bendix Dual piston	ATC28001
ALP184-GC2	1990-1997	Navistar 4700, 4700LP, 4700LPX, 4800, 4900	2.60" Bendix Dual piston	ATC28001
ALP184-GC2	1990-1995	Navistar 7100	2.60" Bendix Dual piston	ATC28001

A-LINE PAD#	FITS YEAR	MAKE/MODEL	DESCRIPTION	A-LINE CALIPER#
ALP184-GC2	1979-1984	Navistar CARGOSTAR	2.60" Bendix Dual piston	ATC28001
ALP184-GC2	1986-1998	Navistar S1652SC	2.60" Bendix Dual piston	ATC28001
ALP184-GC2	1993-2000	Peterbilt 200	2.60" Bendix Dual piston	ATC28001
ALP225-GC2	1995-2000	Peterbilt 200	2.88" Bendix-style dual piston	ATC28000
ALP786-GC2	2008-2012	Peterbilt 325	73mm dual piston Bosch	ATC27115
ALP786A-GC2	2008-2012	Peterbilt 325	66mm dual piston Bosch	ATC27115
ALP786-GC2	2000-2016	Peterbilt 330	73mm dual piston Bosch	ATC27115
ALP786A-GC2	2000-2016	Peterbilt 330	66mm dual piston Bosch	ATC27115
ALP184-GC2	1995-2000	Peterbilt 330	2.60" Bendix Dual piston	ATC28001
ALP786A-GC2	2008-2010	Peterbilt 335	66mm dual piston Bosch	ATC27115
ALP786-GC2	2008-2010	Peterbilt 335	73mm dual piston Bosch	ATC27115
ALP769-GC2	2019-2022	Silverado 4500HD, 5500HD AND 6500HD	Fits Meritor 70mm 4-piston with 2 holes. Fits Meritor 70mm 4-piston with 3 holes. Fits Meritor 64mm 4-piston with 2 holes.	ATC47119 ATC47120 ATC47130
ALP786-GC2	2001-2002	Sterling Acterra 5500, 7500	73mm dual piston Bosch	ATC27115
ALP786A-GC2	2001-2002	Sterling Acterra 5500, 7500	66mm dual piston Bosch	ATC27115
ALP786-GC2	2003	Sterling Acterra 7500	73mm dual piston Bosch	ATC27115
ALP786A-GC2	2003	Sterling Acterra 7500	66mm dual piston Bosch	ATC27115
ALP184-GC2	2001-2008	Sterling Acterra M6500, M7500	2.60" Bendix Dual piston	ATC28001
ALP224-GC2	2001-2006	Sterling Truck Acterra	2.5" Dayton-style dual piston	ATC28004
ALP225-GC2	2003-2008	Sterling Truck Acterra	2.88" Bendix-style dual piston	ATC28000
ALP225-GC2	2001-2007	Sterling Truck Acterra 5500	2.88" Bendix-style dual piston	ATC28000
ALP225-GC2	2001-2007	Sterling Truck Acterra 6500	2.88" Bendix-style dual piston	ATC28000
ALP225-GC2	2007	Sterling Truck Acterra 7500	2.88" Bendix-style dual piston	ATC28000
ALP225-GC2	2001-2006	Sterling Truck Acterra 7500	2.88" Bendix-style dual piston	ATC28000
ALP769-GC2	2007-2008	Workhorse CUSTOM CHASIS R26	Fits Meritor 70mm 4-piston with 2 holes. Fits Meritor 70mm 4-piston with 3 holes. Fits Meritor 64mm 4-piston with 2 holes.	ATC47119 ATC47120 ATC47155
ALP769-GC2	2004-2005 2007-2009	Workhorse CUSTOM CHASIS W24	Fits Meritor 70mm 4-piston with 2 holes. Fits Meritor 70mm 4-piston with 3 holes. Fits Meritor 64mm 4-piston with 2 holes.	ATC47119 ATC47120 ATC47156
ALP769-GC2	2007-2012	Workhorse CUSTOM CHASIS W62	Fits Meritor 70mm 4-piston with 2 holes. Fits Meritor 70mm 4-piston with 3 holes. Fits Meritor 64mm 4-piston with 2 holes.	ATC47119 ATC47120 ATC47157
ALP184-GC2	2002-2003	Workhorse FAST TRACK FT1261, FT1461, FT1601, FT1801, FT1802	2.60" Bendix Dual piston	ATC28001
ALP184-GC2	1999-2005	Workhorse P30, P42, W42	2.60" Bendix Dual piston	ATC28001
ALP184-GC2	1999-2006	Workhorse P32	2.60" Bendix Dual piston	ATC28001
ALP769-GC2	2007-2009	Workhorse R26	Fits Meritor 70mm 4-piston with 2 holes. Fits Meritor 70mm 4-piston with 3 holes. Fits Meritor 64mm 4-piston with 2 holes.	ATC47119 ATC47120 ATC47158
ALP769-GC2	2004-2009	Workhorse W24	Fits Meritor 70mm 4-piston with 2 holes. Fits Meritor 70mm 4-piston with 3 holes. Fits Meritor 64mm 4-piston with 2 holes.	ATC47119 ATC47120 ATC47159
ALP769-GC2	2005-2009	Workhorse W25	Fits Meritor 70mm 4-piston with 2 holes. Fits Meritor 70mm 4-piston with 3 holes. Fits Meritor 64mm 4-piston with 2 holes.	ATC47119 ATC47120 ATC47160
ALP1062-GC2	2006-2011	Workhorse W42 W 9,10,12,14.5K AXLE	60mm TRW-style dual piston	ATC28082 (RH) ATC28083 (LH)
ALP769-GC2	2007-2011	Workhorse W62	Fits Meritor 70mm 4-piston with 2 holes. Fits Meritor 70mm 4-piston with 3 holes. Fits Meritor 64mm 4-piston with 2 holes.	ATC47119 ATC47120 ATC47161



Durable Engineering For All Your Medium Duty Braking Needs

- Class 4 - 7
- Delivery Vehicles
- Cargo Trucks
- School Bus
- Emergency Vehicles
- Utility Vehicles



1555 Enterprise Parkway
Twinsburg, OH 44087 USA

225 Sheldon Drive, Unit 13
Cambridge, ON N1T 1A1, Canada

Toll Free 844-424-7347



ACR
AIR DISC PRODUCTS

www.a-lineparts.com

©2024 ACR Air Disc, LLC

Pub Lot. ALHT012624

Reorder Part No. ALHT2424