

A-LINE™

The Fleet's First Choice



A-LINE CHAMBERS: ENGINEERED FOR HIGH TORQUE, LONG LIFE

A-Line service chambers and spring brakes are engineered for the rugged high heat and high torque environment found in air disc braking applications.

Inferior chamber design will result in premature failure of the chamber, inefficient braking performance, or complete loss of braking when you need it most.

So A-Line chamber products are built with seven critical features to ensure consistent braking and long life. ▶



• **HIGH TORQUE OUTPUT**

• **SEALED PLUNGER**

• **THERMAL RESISTANT**

AIR DISC CHAMBERS



7 Features Engineered For a Better Chamber

Air disc braking applications produce up to 15,000 ft-lbs of pressure with temperatures up to 1,500° F.

To ensure optimum performance, every chamber is built from OE-grade 11 gauge steel. Tempered

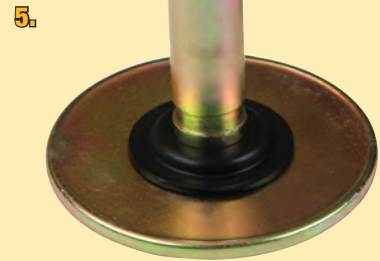
grade 8 bolts are then welded with reinforcements into the casing. Inferior chambers use thinner steels and disfigure under pressure. They also only press in low yield bolts that shear under stress.

After coating each unit with a salt spray resistant e-coating, every chamber and spring brake is then sealed with a dust boot to prevent foreign matter from entering the caliper. A plastic boot guard ring reinforces the dust boot for longer life.

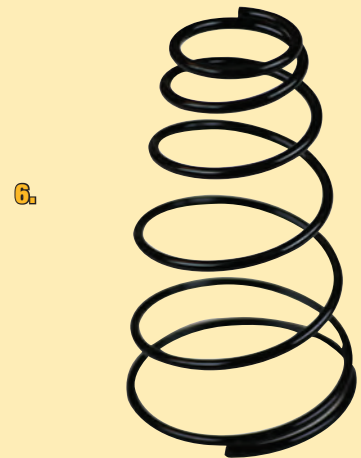
High tensile plungers are zinc coated for corrosion resistance and paired with polycarbonate spring stabilizers.

Thermal-resistant epoxy-coated springs and web-reinforced diaphragms are used to withstand extreme temperatures.

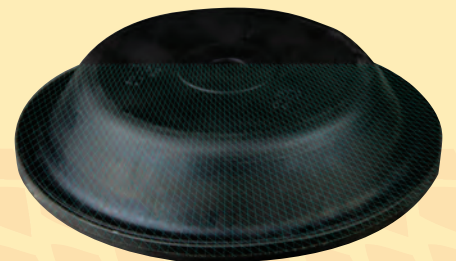
Finally, every A-Line service chamber and spring brake comes with a two-year full replacement guarantee.



1. Weld-reinforced tempered grade 8 bolts
2. Heavy duty 11-gauge casing
3. Sealed Hi-Temp TPR dust boots for maximum caliper protection
4. Protective ring guard for plunger piloting and boot protection
5. Zinc coated plungers with polycarbonate
6. OE-grade coated springs for longer life
7. Fiber reinforced diaphragms for high thermal applications



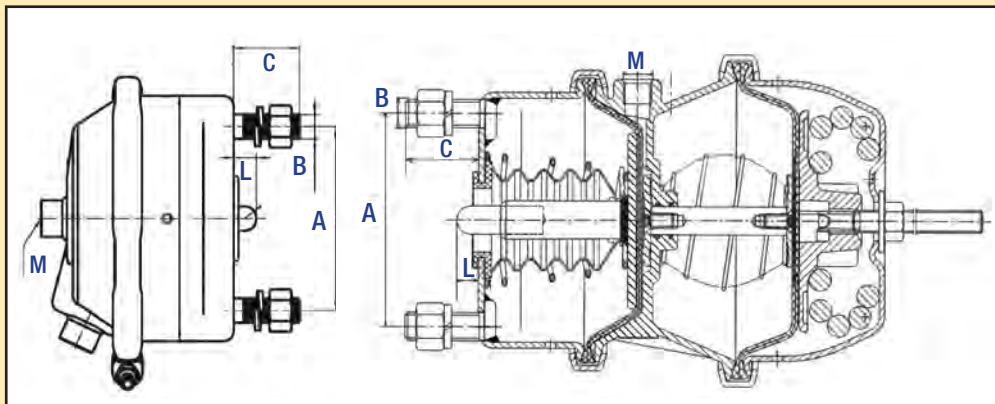
7.



1.



A-Line Part#	Industry Ref.	Description	A	B	C	L		M	FULL STROKE		ADB MODEL / APPLICATION
			BOLT DISTANCE CENTER (mm)	BOLT THREAD	BOLT LENGTH (mm)	STROKE LENGTH FROM COVER		PORT THREAD	in.	mm	
						in.	mm				
ALSDT14	T14DISC	Type 14 Diaphragm Service Chamber	120.70	M16 x 1.5	37	.60	15	3/8"-18 NPT	2.25	57	Steer service chamber for Bendix applications
ALSDT16	T16DISC	Type 16 Diaphragm Service Chamber	120.70	M16 x 1.5	37	.60	15	3/8"-18 NPT	2.25	57	Steer service chamber for Bendix / Meritor applications
ALSDT18	T18DISC	Type 18 Diaphragm Service Chamber	120.70	M16 x 1.5	37	.60	15	3/8"-18 NPT	2.5	64	Steer service chamber for Bendix, Knorr, WABCO applications
ALSDT20	T20DISC	Type 20 Diaphragm Service Chamber	120.70	M16 x 1.5	37	.60	15	3/8"-18 NPT	2.5	64	Steer service chamber for Bendix, Haldex, Knorr, Meritor, WABCO applications
ALSDT24	T24DISC	Type 24 Diaphragm Service Chamber	120.70	M16 x 1.5	37	.60	15	3/8"-18 NPT	2.5	64	Steer service chamber for Bendix, Haldex, Knorr, Meritor, WABCO applications
ALSD1624	T16/24DISC	16/24 Double Diaphragm Spring Brake	120.70	M16 x 1.5	38	.60	15	3/8"-18 NPT	2.25	57	Motorcoach applications for Knorr Bremse SN7, Meritor ELSA-2, EX225 H2
ALSD1824	T18/24DISC	18/24 Double Diaphragm Spring Brake	120.70	M16 x 1.5	38	.60	15	3/8"-18 NPT	2.25	57	Combination spring brake for Bendix and Wabco trailer and drive axles
ALSD2024	T20/24DISC	20/24 Double Diaphragm Spring Brake	120.70	M16 x 1.5	38	.60	15	3/8"-18 NPT	2.25	57	Combination spring brake for Wabco PAN 22 trailer axles
ALSD2030	T20/30DISC	20/30 Double Diaphragm Spring Brake	120.70	M16 x 1.5	37	.60	15	3/8"-18 NPT	2.5	64	Combination spring brake for Haldex D22LD trailer axles
ALSD2424	T24/24DISC	24/24 Double Diaphragm Spring Brake	120.70	M16 x 1.5	43	.60	15	3/8"-18 NPT	2.5	64	Combination spring brake for Bendix and Wabco trailer and drive axles
ALSD2430	T24/30DISC	24/30 Double Diaphragm Spring Brake	120.70	M16 x 1.5	45	.60	15	3/8"-18 NPT	2.5	64	Combination spring brake for Meritor EX225 H2 (Severe Service)



Bendix, Haldex, Knorr, Meritor and WABCO are trademarked trade names of their respective corporations. Their use in this brochure is intended for reference purposes only and implies no affiliation or ownership by A-Line or its parent corporation. A-Line is the registered trademark of ACR Holdings Delaware, ULC. © 2021 ACR Holdings Delaware, ULC. All rights reserved. This material may not be reproduced, displayed, modified or distributed without the express prior written permission of the copyright holder. For permission, contact ACR Holdings Delaware, ULC, 6290 Belle River Road, China, MI 48054.

A-Line Part#	Description	Bendix	Haldex	Hendrickson	Knorr Bremse	Meritor	MGM	SAF
ALSDT14	Type 14 Diaphragm Service Chamber	BS3251, BS3281, BS3294, BS3296, BS3297, BS3298, BS3299, K028039			K004737N00, K019133, K028079N00, K028080N00, K029440N00, K029441N00, I131782			
ALSDT16	Type 16 Diaphragm Service Chamber	BS2306, BS2307, BS2323, K028226			K006510N00, K006511N00, K031601N00		CSB16D051, CSB16D	
ALSDT18	Type 18 Diaphragm Service Chamber	BS3350, BS3379, K028022			I115229, K028697N00		CSB18D051, CSB18D	
ALSDT20	Type 20 Diaphragm Service Chamber	BS3402, BS3403, BS3404, BS3415, BS3423, K028225	SC20D / 125200101	S-32793	K005086, K005087, I131098, I132710, K003020	20HSCND2-3630	CSB20D051, CSB20D, CS20L	
ALSDT24	Type 24 Diaphragm Service Chamber	BS3501, K028252	SC24D / 125240101		K002623N00	24HSCND2-3632	CSB24D010, CSB24D, CSB24D011, CSB24D, CSB24D051, CSB24D, C24L	
ALSD1624	16/24 Double Diaphragm Spring Brake	BS7304, BS7309, BS7312, BS7313, BS7318, BS7319, K026731, K042457			K026894N00, K026896N00, K026898N00, K026899N00, K026900N00, K026901N00	1616HTLD2-3627	TRB1624DT051, TRB1624DT	04454109864Z
ALSD1824	18/24 Double Diaphragm Spring Brake	K026903N00, K026904N00, K026905N00, K043329BXW		S-33417-L, SS3417-R, S33417-U	BS7351, BS7355, BS7356, K025670, K043329	1824HTND2-3628, 1816HTND2-3669	TRB1824DT051, TRB1824DT	04454109964Z
ALSD2024	20/24 Double Diaphragm Spring Brake	K025669, K041960	GC2024D	S-34421	BS9404	2024HTND2-3626	TRB2024DT051, TRB2024DT, TR2024LTHD, TR2024LT	04454110064Z
ALSD2424	24/24 Double Diaphragm Spring Brake	K043270			BS9503	2424HTND2-3629	TRB2424DT051, TRB2424DT, TR2424LT, TR2424LTHD	
ALSD2430	24/30 Double Diaphragm Spring Brake		GC2430D / LC2430D				TR2430LT, TR2430LTHD	

Manufacturers frequently add, delete, or supersede part numbers. If your part number is not listed, please contact our tech department at 844-424-7347.



5620 West 51st Street
Forest View, IL 60638

125 Guelph Avenue
Cambridge, Ontario N3C 1A5

Toll Free 844-4AIR DISC
(424-7347)



www.a-lineparts.com



ALCH020117